



1205 Palo Duro Court

Burleson, TX 76028

4

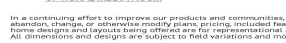
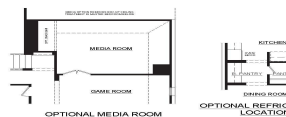
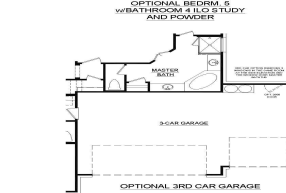
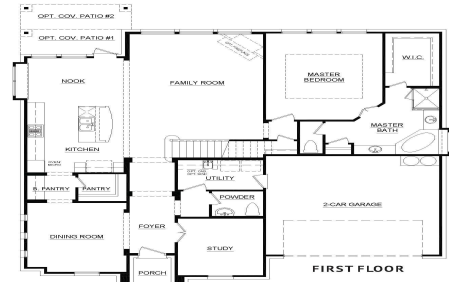
3.5

3,135

2

CONCEPT 3135

- 4 Bedrooms
- 5 Full Baths
- Powder Room
- Family Room
- Breakfast Nook
- Dining Room
- Study
- Game Room
- Optional Fireplace
- Optional Covered Patio
- Optional Bedroom 5 I/O Study
- Optional Media Room
- Optional Refrigerator Location
- Optional 3-Car Garage



In a continuing effort to improve our products and communities, Antares Homes may (in its sole and exclusive discretion and without creating any obligation or notice) abandon, change, or otherwise modify plans, pricing, included features, home site availability terms, etc. All images, renderings, dimensions, depictions or descriptions of home designs and layouts being offered are for representational and informational purposes only and may vary from the homes being built or completed improvements. All dimensions and designs are subject to field variations and modifications. © 2022 Antares Homes.

This expansive home offers a traditional floor plan for those seeking classic style and easy daily living. Step in from the covered front porch and into the foyer which welcomes you into the private study. Finished with double doors, this space creates the perfect home office or a quiet area to enjoy hobbies. Across the foyer is the formal dining room filled with natural light, an ideal space for entertaining guests or enjoying everyday family mealtime. Connected by a butler's pantry and a large walk-in pantry is the open-concept kitchen. The kitchen features a large central island, stainless steel appliances, and ample counter and storage space. It also opens to a breakfast nook with a built-in window seat for additional seating. The breakfast nook also provides direct access to the rear-covered patio. The spacious family room features a wall of windows and offers a space for friends and family to gather around the fireplace. Designed for optimal privacy and relaxation, the master suite is tucked away from the family room. Enjoy a spacious room with vaulted ceilings and an adjoined master bathroom featuring dual vanities, a large corner garden tub, a separate walk-in shower, a linen closet, and a large walk-in closet. For added convenience, a powder room and full-sized utility room with direct access to the two-car garage complete the lower level. Three additional bedrooms, two full bathrooms, and a large game room are housed on the second level, creating the ultimate kid's retreat.





Floorplan 3135

CONCEPT 3135

- 4 Bedrooms
- 3 Full Baths
- Powder Room
- Family Room
- Breakfast Nook
- Dining Room
- Study
- Game Room
- Optional Fireplace
- Optional Covered Patio
- Optional Bedroom 5 ilo Study
- Optional Media Room
- Optional Refrigerator Location
- Optional 3-Car Garage



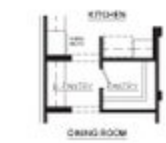
OPTIONAL BEDRM. 5
w/BATHROOM 4 ILO STUDY
AND POWDER



OPTIONAL 3RD CAR GARAGE



OPTIONAL MEDIA ROOM



OPTIONAL REFRIGERATOR
LOCATION



FIRST FLOOR



SECOND FLOOR

In a continuing effort to improve our products and communities, Antares Homes may (in its sole and exclusive discretion and without creating any obligation or notice) abandon, change, or otherwise modify plans, pricing, included features, home site availability terms, etc. All images, renderings, dimensions, depictions or descriptions of home designs and layouts being offered are for representational and informational purposes only and may vary from the homes being built or completed improvements. All dimensions and designs are subject to field variations and modifications. © 2022 Antares Homes.

